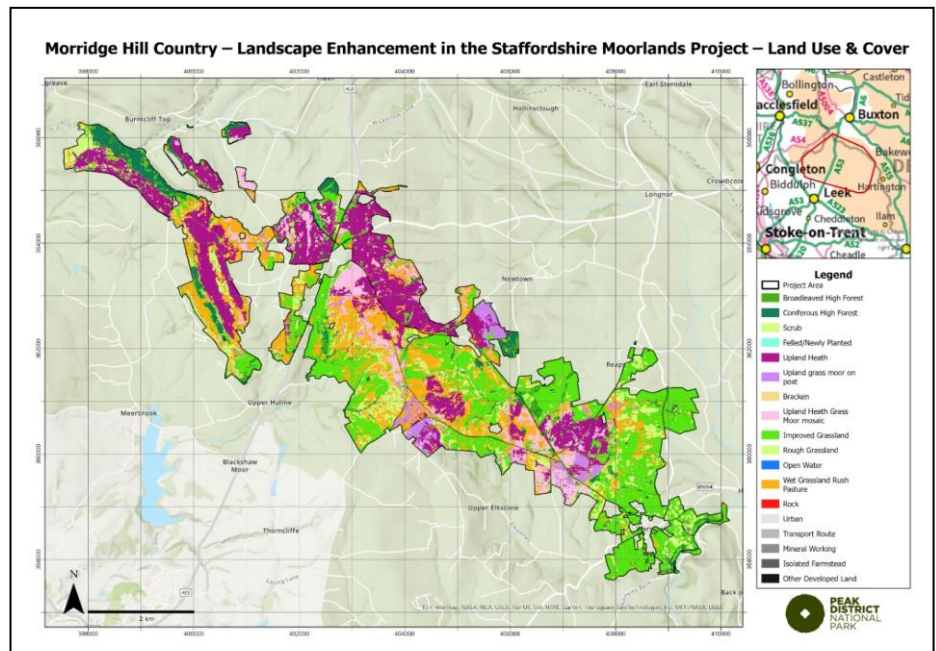


Appendix 1 – Environmental Land Management Landscape Recovery Pilot Application for Morridge Hill Country – Landscape Recovery in the South West Peak

Project Area

The Development Phase bid submitted in September 2023 included land in the target area shown on the map. This is based on land owned by the Peak District National Park Authority (Warslow Moors Estate), Staffordshire Wildlife Trust and the Ministry of Defence including many of the tenants who manage the land involved.

The total area where the land owners, land managers and tenants have indicated their willingness to be part of the project extends to 2,663 hectares. It is hoped that those tenants who have not wished to be part of the project initially may choose to participate later in the process. Also, in the medium term that there may be opportunities to extend the opportunity to adjoining/close privately owned and managed land extending the area to at least 3,500 hectares.



The Ambition

Our protected landscapes are vital to combat both climate and biodiversity crises. Morridge Hill Country's ambition is to provide hope and inspiration for enhancing biodiversity in one of the world's most visited national parks – The Peak District, by working with 15 private and public landowners across 3,500 hectares to create a 'bigger, better, and more connected natural landscape. By developing novel private finance access for family farms, it is hoped to increase local sustainable food production alongside increasing abundance of keynote species e.g., golden plover and water vole, which enhances the areas special qualities. The role of Pump Farm on the Warslow Moors Estate will also be explored as a demonstration farm/hub.

Background

The project seeks to deliver the Lawton principles of Bigger, Better, More and Joined to effect change at a landscape scale and address both Nature Recovery and ambitions for Net Zero. The project builds on a range of existing, earlier or new initiatives of working with farmers and land managers for example the Authority's Farm Advice Service, the completed ELMs Test and Trial, the Farming in Protected Landscapes Programme, the evolving Peak District Nature Recovery Plan and the new ELMs Test and Trial on the role of National Park Authorities as local convener and local delivery.

Proposed Project Structure

The Development Phase bid includes funding for a Project Manager, Biodiversity Interventions Officer, Stakeholder Engagement Comms (Farm advice) Officer, Cultural heritage support, Project Administrator and an apprentice. Surveys, research and assessments for soil health, carbon and accessibility will also be involved. It is likely that at least the Project Manager, Stakeholder Engagement Comms (Farm advice) Officer, Cultural heritage support, Project Administrator and an apprentice will be employed by the Authority. Specialist consultants will also be brought in for assessing the potential for natural capital investment and developing appropriate payment rates.

NB. Please note that if the application is successful final details will need to be agreed with Defra during the enrolment period so the number of Authority officers may change.